

# Cyfyngiad ar Fynediad



# Access Restriction

Ar Dir Fynediad  
(Deddf Cefn Gwlad a Hawliau Tramwy 2000)

From Access Land  
(Countryside and Rights of Way Act 2000)

Rheoliadau Mynediad i Gefn Gwlad (Gwahardd Neu Gyfyngu Mynediad) (Cymru) 2003  
Countryside Access (Exclusion or Restriction of Access) (Wales) Regulations 2003

Caiff pobl â chŵn eu gwahardd o'r tir mynediad a ddangosir o fewn y llinell goch ar y map isod.

People with dogs are excluded from the area of access land shown within the red line on the map below.

(Y tir comin sy'n cynnwys corlwyni a glaswelltir uwchben giatiau'r bryn a ffensys cyfagos.)

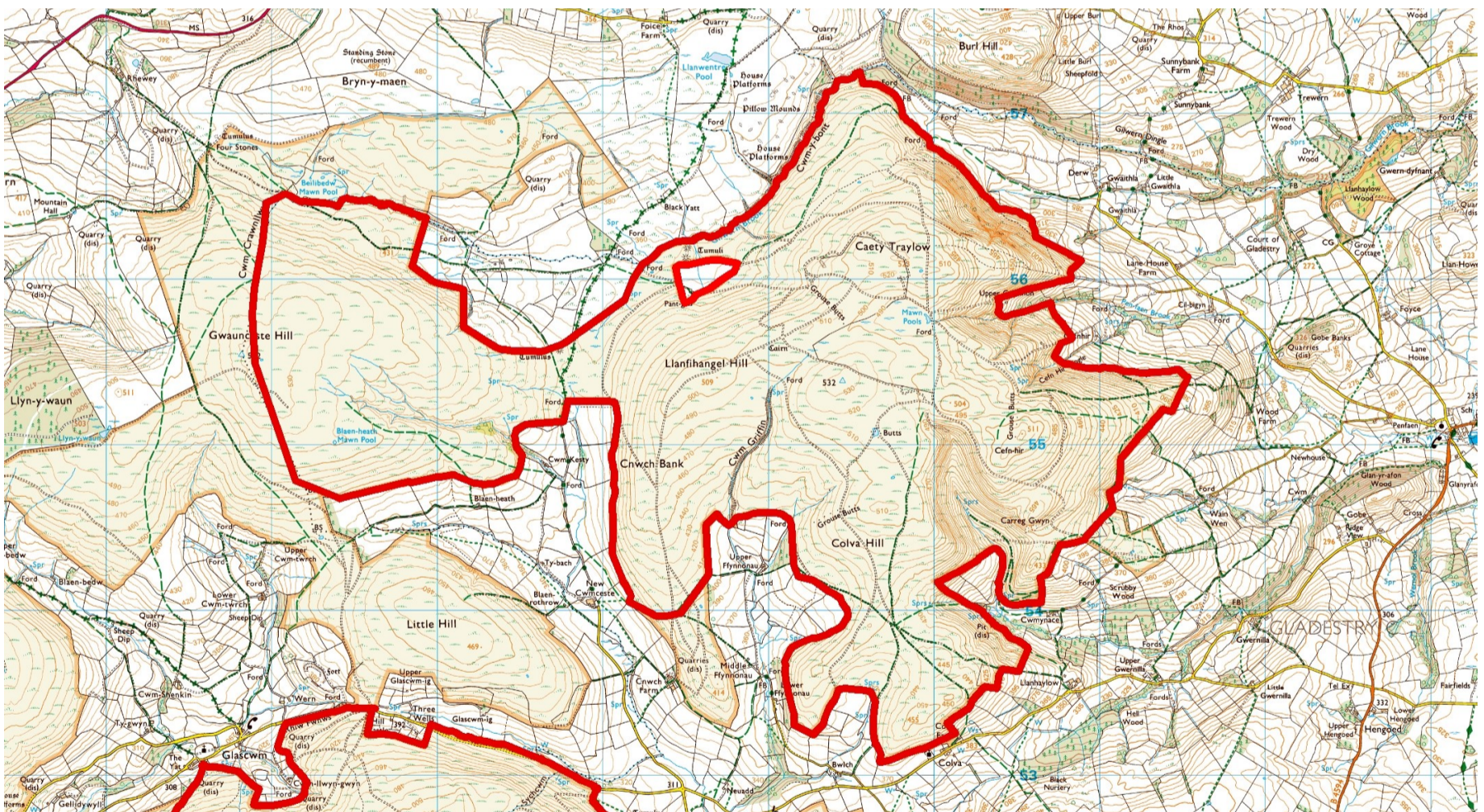
(The common land comprising dwarf shrub and grassland above the hill gates and adjoining fencing.)

Mae'r cyfyngiad yn berthnasol rhwng:

This restriction applies from:

25 Mehefin 2021 - 24 Mehefin 2026

25 June 2021 - 24 June 2026



© Hawffraint y Goron. Cedwir pob hawl. Cyfoeth Naturiol Cymru, 100019741.

© Crown copyright. All rights reserved. Natural Resources Wales, 100019741.

Mae hyn er mwyn osgoi aflonyddu a rhoi cymorth i wella poblogaeth leol y rugiar goch.

This is to avoid disturbance and help with the recovery of the local population of red grouse.

Nid yw'r gwaharddiad hwn ar fynediad yn effeithio ar ddefnydd a wnewch o unrhyw Hawliau Tramwy Cyhoeddus presennol.

Your use of any existing Public Rights of Way is not affected by this access exclusion.

Llinell Ymholiadau - Enquiries Line: 0300 065 3000. Cyf/Ref: NO210470

[www.cyfoethnaturiolcymru.gov.uk](http://www.cyfoethnaturiolcymru.gov.uk) / [www.naturalresourceswales.gov.uk](http://www.naturalresourceswales.gov.uk)