

Cyfyngiad ar Fynediad

Ar Dir Fynediad
(Deddf Cefn Gwlad a Hawliau Tramwy 2000)



Access Restriction

From Access Land
(Countryside and Rights of Way Act 2000)

Rheoliadau Mynediad i Gefn Gwlad (Gwahardd Neu Gyfyngu Mynediad) (Cymru) 2003
Countryside Access (Exclusion or Restriction of Access) (Wales) Regulations 2003

Caiff pobl â chŵn eu gwahardd o'r tir mynediad a ddangosir o fewn y llinell goch ar y map isod.

(Y tir comin sy'n cynnwys corlwyni a glaswelltir uwchben giatiau'r bryn a ffensys cyfagos.)

Mae'r cyfyngiad yn berthnasol rhwng:

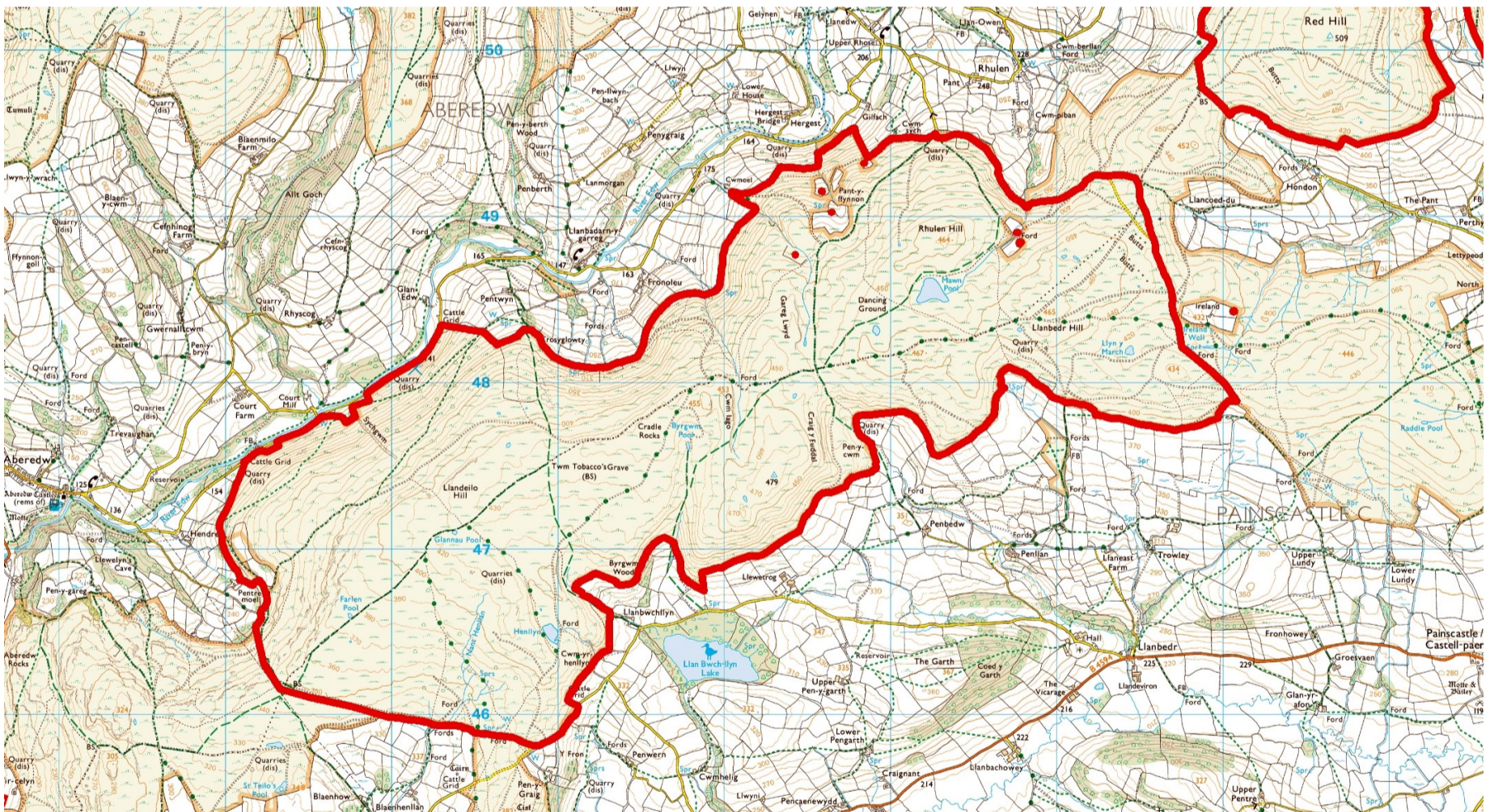
25 Mehefin 2021 - 24 Mehefin 2026

People with dogs are excluded from the area of access land shown within the red line on the map below.

(The common land comprising dwarf shrub and grassland above the hill gates and adjoining fencing.)

This restriction applies from:

25 June 2021 - 24 June 2026



© Hawffraint y Goron. Cedwir pob hawl. Cyfoeth Naturiol Cymru, 100019741.

© Crown copyright. All rights reserved. Natural Resources Wales, 100019741.

Mae hyn er mwyn osgoi aflonyddu a rhoi cymorth i wella poblogaeth leol y rugiar goch.

Nid yw'r gwaharddiad hwn ar fynediad yn effeithio ar ddefnydd a wnewch o unrhyw Hawliau Tramwy Cyhoeddus presennol.

This is to avoid disturbance and help with the recovery of the local population of red grouse.

Your use of any existing Public Rights of Way is not affected by this access exclusion.

Llinell Ymholiadau - Enquiries Line: 0300 065 3000. Cyf/Ref: NO210470

www.cyfoethnaturiolcymru.gov.uk / www.naturalresourceswales.gov.uk